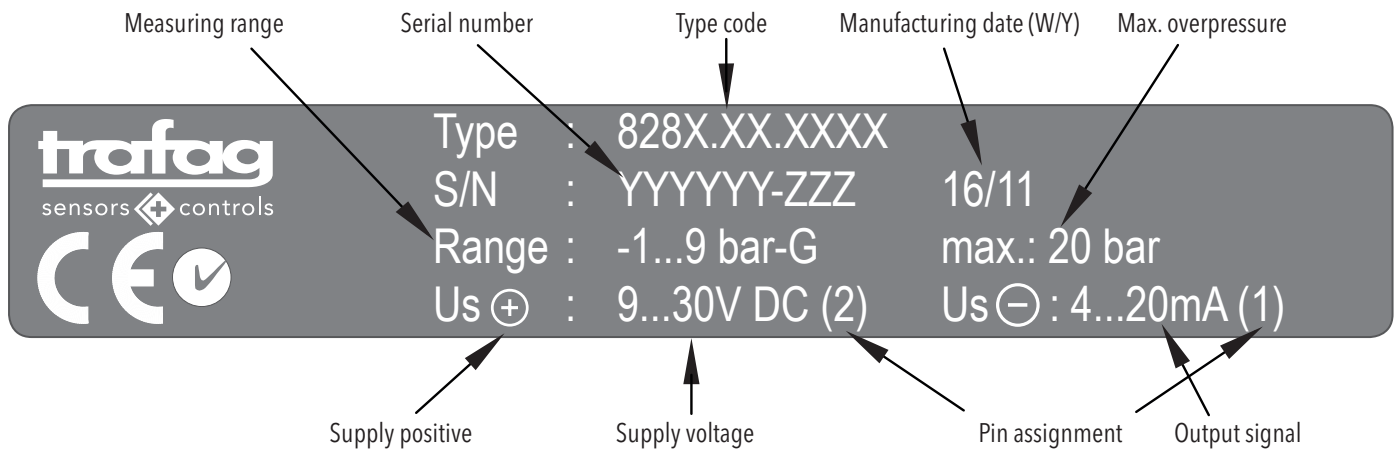


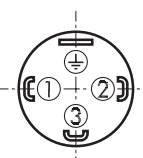
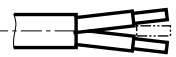
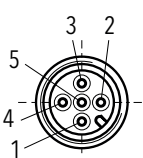
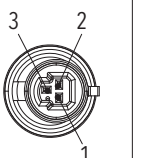
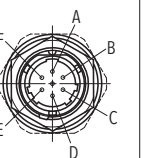
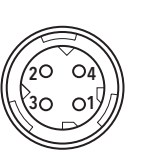
**Technical specification**

Mounting torque: 25 Nm  
 Ambient temperature: -40°C ... +125°C  
 Cable PVC: -5°C ... +60°C / Cable PUR: -20°C ... +70°C / Cable Raychem: -20°C ... +100°C  
 Media temperature: -40°C ... +125°C,  
 -25°C ... +125°C, -18°C ... +125°C, depending on seal material

**Type label description**



**Electrical connections**

Ingress Protection	IP65 <sup>2)</sup> IP67 <sup>1)</sup>	IP68 max. 3m	IP67 <sup>2)</sup>	IP67 <sup>2)</sup>	IP67	IP69K <sup>2)</sup>
Designation	EN175301-803A (DIN43650-A)	Cable* (PVC) (PUR) 4 x 0.25mm <sup>2</sup>	M12x1 5-pol.	Packard Metri Pack 3-pol.	MIL-C 26482	DIN 72585 Code 1
Type code	828X.XX.XXXX.05	828X.XX.XXXX.24/22/08	828X.XX.XXXX.35	828X.XX.XXXX.51	828X.XX.XXXX.02	828X.XX.XXXX.25
Pin configuration						

**Output**

4 ... 20 mA  
 0 ... 5 VDC  
 0.5 ... 5 VDC  
 1 ... 6 VDC  
 0 ... 10 VDC  
 0.5 ... 4.5 VDC ratiom.

**Load resistance**

(U<sub>SUPPLY</sub> - 9V) / 20mA  
 > 2.5 kΩ  
 > 5.0 kΩ  
 > 5.0 kΩ  
 > 5.0 kΩ  
 ≥ 5.0 kΩ

**I<sub>SUPPLY</sub>**

<10 mA  
 <10 mA  
 <10 mA  
 <10 mA  
 ≤ 10 mA

**U<sub>SUPPLY</sub>**

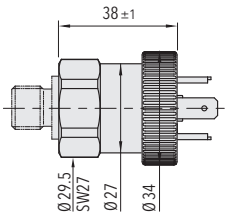
9 ... 32 VDC  
 9 ... 32 VDC  
 9 ... 32 VDC  
 9 ... 32 VDC  
 15 ... 32 VDC  
 5 (4.75 ... 5.25) VDC

<sup>1)</sup> With Trafag IP67 connector only

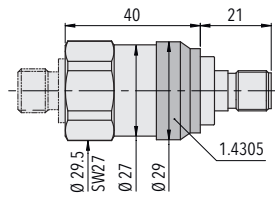
<sup>2)</sup> Provided female connector is mounted according to instructions

\* Ventilation via connector. Shield in the device is not connected

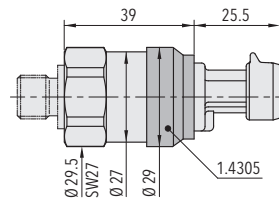
## Electrical connections



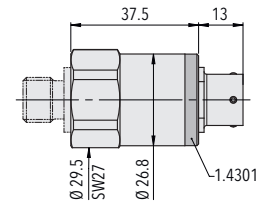
828X.XX.XXXX **05** XX.XX



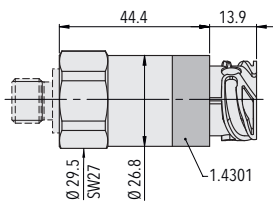
828X.XX.XXXX **35** XX.XX



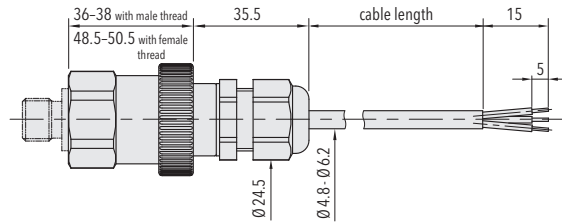
828X.XX.XXXX **51** XX.XX



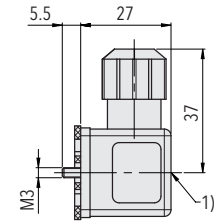
828X.XX.XXXX **02** XX.XX



828X.XX.XXXX **25** XX.XX



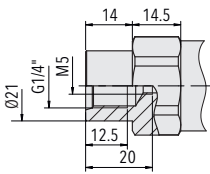
828X.XX.XXXX **24/22/08** XX.XX



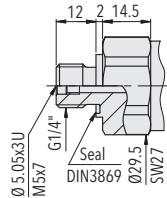
1) Tightening torque 50...60 Ncm

828X.XX.XXXX.XX.XX **46/56**

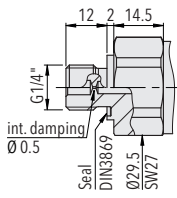
## Pressure connections



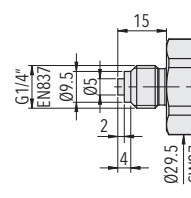
828X.XX.XX **10** XX...



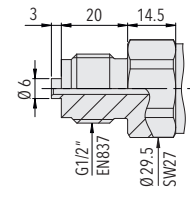
828X.XX.XX **17** XX...



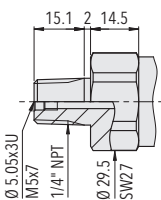
828X.XX.XX **15** XX...



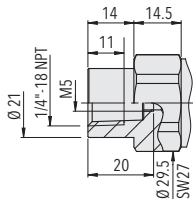
828X.XX.XX **53** XX...



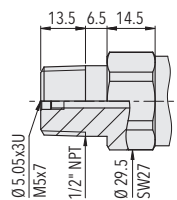
828X.XX.XX **11** XX...



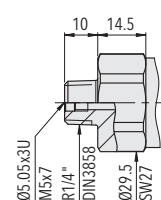
828X.XX.XX **30** XX...



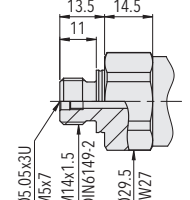
828X.XX.XX **13** XX...



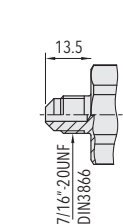
828X.XX.XX **51** XX...



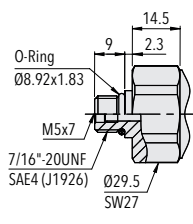
828X.XX.XX **19** XX...



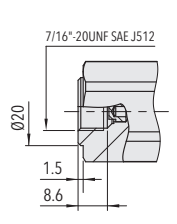
828X.XX.XX **31** XX...



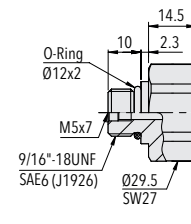
828X.XX.XX **18** XX...



828X.XX.XX **42** XX...



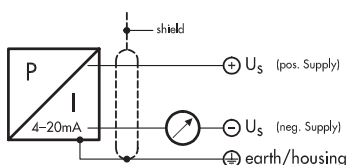
828X.XX.XX **24** XX...



828X.XX.XX **61** XX...

## Connection of the measuring equipment

### Current output 2-wires



### Voltage output 3-wires

