

Instructions **Integrated test valve for gas density monitor**
(W0/W1/W2/W3)
Integrated re-filling valve for gas replenishment
(F0/F1/F2/F3)

A) Integrated test valve for gas density monitor switchpoint verification

Purpose: Test valve allows in-situ density monitor and sensor verification without dismounting equipment from pressure compartment. Test equipment is connected via DILO DN8 port.

B) Integrated re-filling valve for insulating gas replenishment

Purpose: Re-filling valve allows direct insulating gas replenishment of pressure compartment via DILO DN8 port.

Technical specifications

(applies to both valves)

Characteristics

Principle: Spring loaded 3-way valve
 Overpressure: max. 13 bar abs.
 Ambient temperature: -40°C ... +80°C
 Operating specifications: Opening and closing of valve shall be limited to temperature range of -25°C ... +50°C

Mechanical data

Process gas wetted sealing: 2 x O-ring EPDM 70 Sh A
 or 2 x O-ring IIR 75 Sh A depending on order specification
 Protection cap nut: EN AW-6026 AlMgSiPb0.4 orange anodized
 Valve body: 1.4404 (AISI316L)
 Valve tappet: Brass (CuZn39Pb3)
 Mechanical lifetime: min. 250 actuation cycles at -25°C ... +50°C
 Connection: according DILO DN8
 Weight integrated monitor with 3-way valve: 1100 ... 1300 g

Storage

Temperature: -40°C ... +80°C (warehouse recommended)
 Humidity: max. 90% rel.

Automatic function, safe by design

Gas loss from gas compartment through both valves is not possible, neither if the test or re-fill hose is improperly connected nor if the valve tappet is intentionally manipulated. Whenever the valve opens to the DILO DN8 connector, the connection to the gas compartment remains shut-off.

Disposal notice

Depending on density monitor specification, the sealed reference gas chamber contains max. 0.001kg of SF₆ gas. The relevant national regulations governing the disposal of hazardous waste apply and must be followed. Decommissioned or defective monitors can be returned to the manufacturer for disposal in a safe and environmentally appropriate manner.

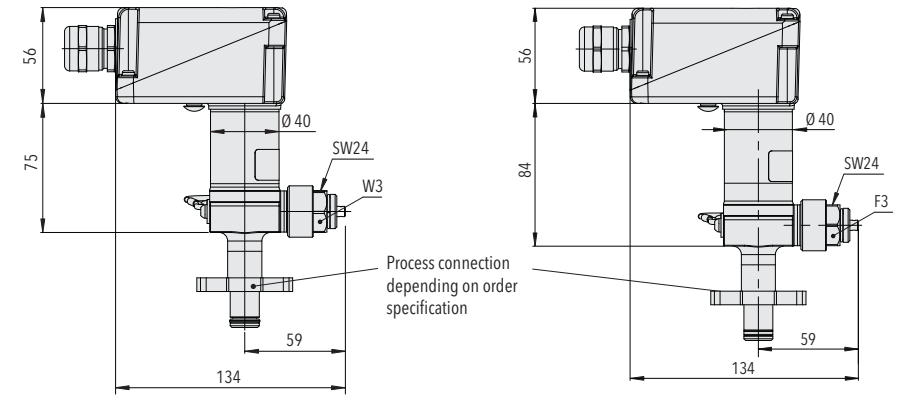
We reserve the right to make alternations as technical progress may warrant. H73521d Trafag AG 08/2020

Dimensions

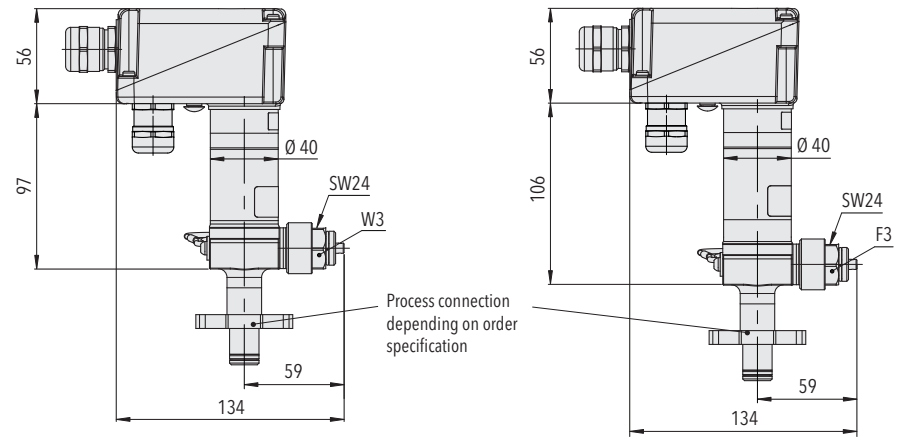
A) Integrated test valve

B) Integrated re-filling valve

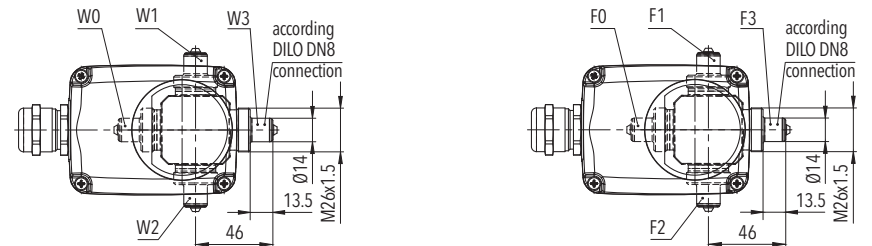
87x6 / 87x8 gas density monitors



879x / 878x hybrid gas density monitors

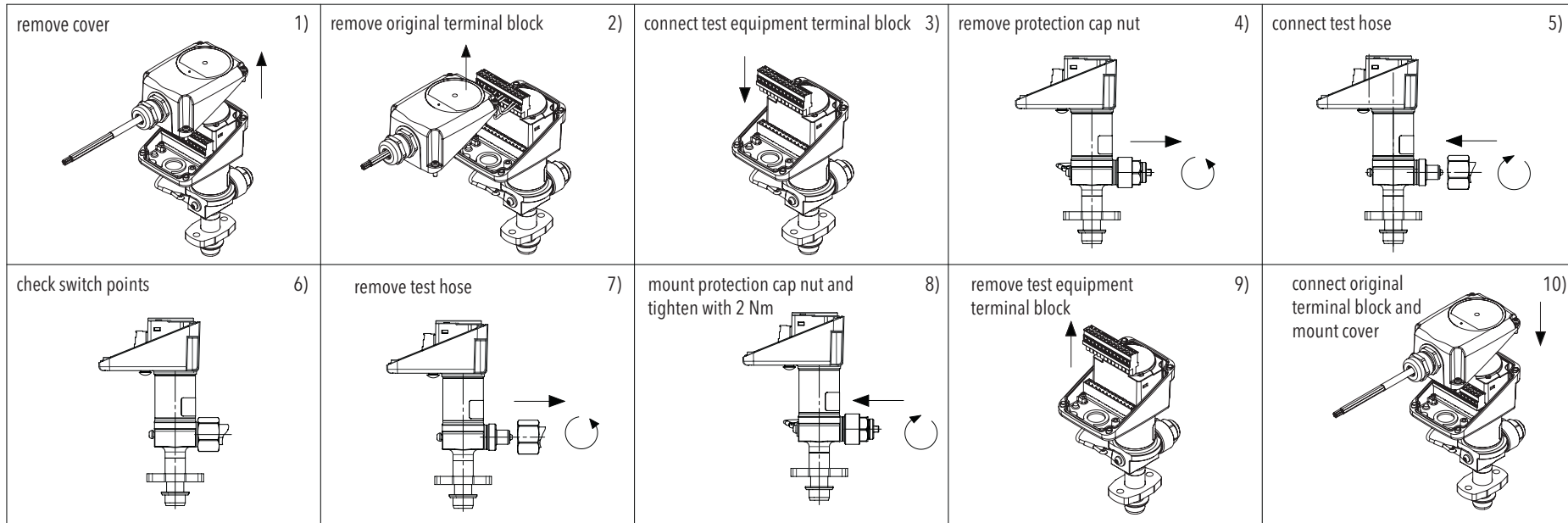


Valve orientation (top view) for all gas density monitors



Use of valve

A) Integrated test valve (example W3 valve orientation)



ATTENTION

Housing O-Ring



Check whether O-ring of housing is correctly positioned in order to ensure seal

Incorrect

Indicator cover



Important

Do not remove indicator cover
Do not exert pressure on SF₆ indicator

B) Integrated re-filling valve (example F3 valve orientation)

