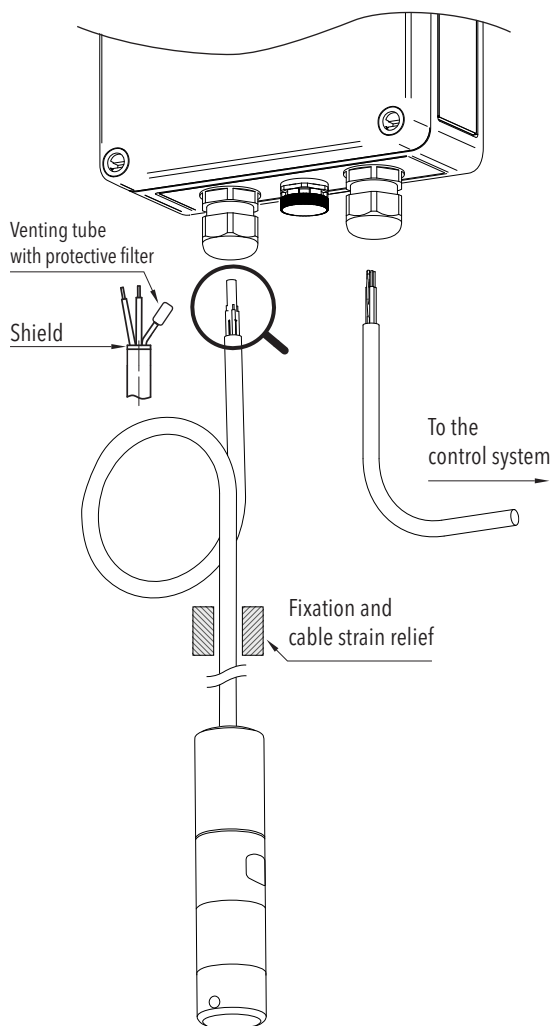


# VENTBOX

## Ventilated terminal box for the safe connection of level probes

The terminal box with integrated ventilation membrane enables the operationally safe connection of level probes. The cable of the level probe with integrated ventilation hose is connected in the terminal box with the standard cable without ventilation hose leading to the control unit. The special ventilation membrane on the terminal box enables reliable pressure equalisation, but prevents the penetration of moisture that could lead to condensation in the level probe.



## Connection of the level probe

The cable of the level probe is led through the cable gland into the housing. The cable gland must be tightened in such a way that the cable is securely fastened, but the vent hose in the cable is not squeezed too much.

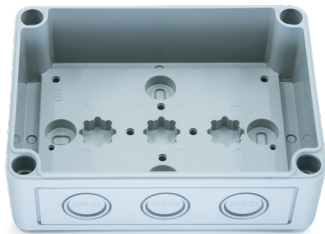
In general, the cable of the level probe should not be shortened, because otherwise the protective filter on the vent hose will be removed and water and moisture can penetrate. It is recommended to install the cable with a loop at the terminal box so that a siphon is formed in which any liquid can collect.

Furthermore, it is recommended that one or, in the case of longer cables, several strain reliefs are used in the cable installation so that the entire weight of the cable does not rest on just one clamping point. A suitable strain relief clamp is available from Trafag.

Cable entry position	Freely selectable with the predefined cable entries
Cable diameter	2 ... 7 mm
Strand diameter	0,14 - 2,5mm <sup>2</sup> or AWG 28 - 12
Number of connections	Max. 3 Conductor + Earth
Protection class (with correct installation)	IP 66 (when using suitable installation parts in the enclosure wall), IK07; protection class II
Material	Polystyrene, grey similar to RAL 7035
Dimensions (L x W x H)	130 x 94 x 57 mm

# VENTBOX

## Scope of delivery



1 x Assembly box



4 x Protective cap for mounting holes



2 x Cable gland reducer



2 x Cable gland M16



2 x Locknut M16



1x Pressure equalisation element M12, IP68



1 x Reducing ring M20/M12



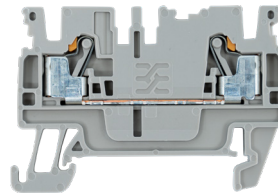
1 x Locknut M20



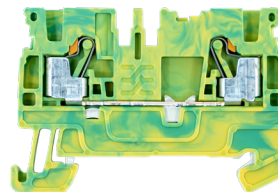
2 x Mounting screws



1 x Standard rail



3 x Feed-through terminal block 0,14-2,5mm² or AWG 28-12, grey



1 x Protective conductor terminal block 0,14-2,5mm² or AWG 28-12, green/yellow



2 x End support



1 x Cover plate



1 x Labelling clip



4 x Cover screws

1 x Cover for mounting box



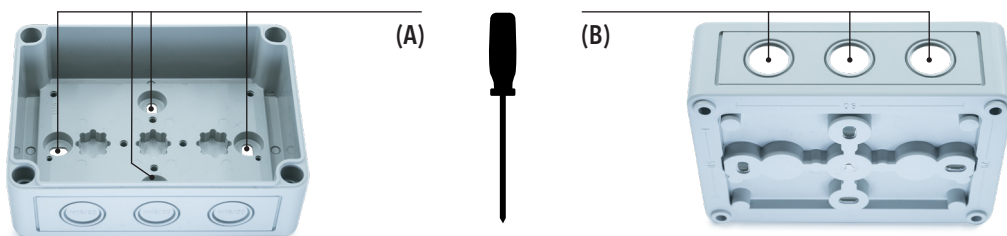
**DOWNLOAD**  
Assembly instructions

# VENTBOX

## Instructions

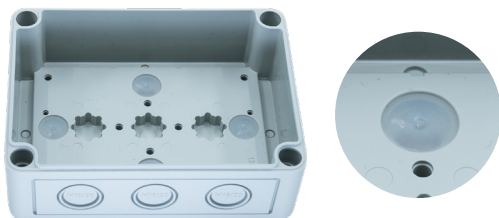
Open the required mounting holes on the back of the main housing to ensure secure mounting (A),  
Open fixing holes for cable entries (B)

**1**  
step



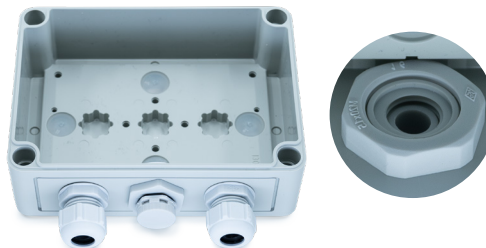
Press the protective caps into the open fastening holes

**2**  
step



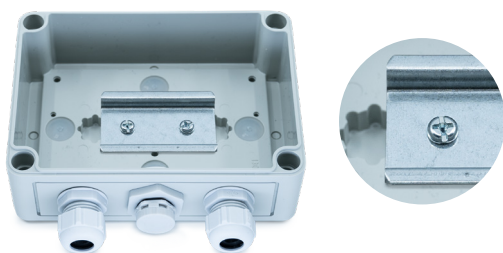
Fix cable glands in the main housing with locknuts

**3**  
step



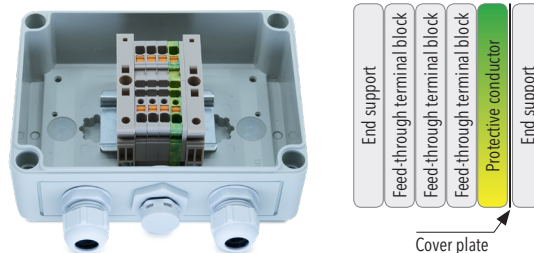
Screw the standard rail into the predefined screw into the predefined drill holes

**4**  
step



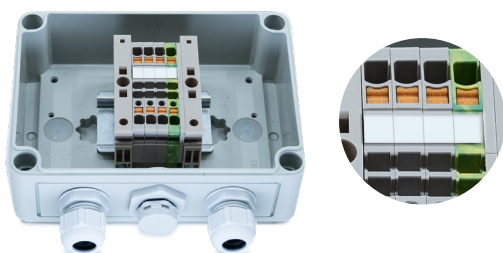
Insert clamps and fix the position by means of screws in the end fixings, put on end cover

**5**  
step



Clip on for labelling

**6**  
step



Put on the cover, insert the cover screws and screw them tightly onto the main housing

**7**  
step

